

M60/M62/M66 Simister Island Interchange

TR010064

5.2 CONSULTATION REPORT ANNEX

ANNEX E: Draft SoCC to Bury Council 18
November 2021

APFP Regulation 5(2)(q)

Planning Act 2008

Infrastructure Planning (Applications: Prescribed
Forms and Procedure) Regulations 2009

Infrastructure Planning

Planning Act 2008

**The Infrastructure Planning
(Applications: Prescribed Forms and
Procedure) Regulations 2009**

M60/M62/M66 Simister Island Interchange
Development Consent Order 202[]

5.2 CONSULTATION REPORT ANNEX

ANNEX E: Draft SoCC to Bury Council 18 November 2021

Regulation Reference	Regulation 5(2)(q)
Planning Inspectorate Scheme Reference	TR010064
Application Document Reference	TR010064/APP/5.2
Author	M60/M62/M66 Simister Island Interchange Project Team

Version	Date	Status of Version
P01	April 2024	DCO APPLICATION ISSUE

CONTENTS

- E.1 Draft SoCC to Bury Council 18 November 2021
- E.2 Draft SoCC email to Bury Council 18 November 2021

Annex E

E.1 Draft SoCC to Bury Council 18 November 2021

M60/M62/M66 Simister Island Interchange
Statement of Community Consultation (SoCC)

- 1.1 We operate, maintain and improve England's motorways and major A-roads, the strategic road network. The M60/M62/M66 Simister Island Interchange, previously known as M60 J18 Simister Island Interchange is a critical part of our ongoing investment, and will improve journeys between the M60, M62 and M66 which will bring benefits to the local area and the north-west as a whole.
- 1.2 We are publishing this Statement of Community Consultation (SoCC) to outline our approach to consulting with the local community for the above proposed scheme. It provides details about how you (the local community) can take part and how feedback will be used to influence our proposed design.
- 1.3 To make sure we approach our consultation in the very best way for the local community, we've consulted on this document with Bury Council, who are the local authority in the area in which the scheme is proposed to be built and where the proposed scheme may significantly impact.
- 1.4 This document also gives you the background to the proposed scheme and how our application to build it will progress.

2 Our application

- 2.1 The proposed scheme is being developed under the Planning Act 2008 and we are publishing this statement under Section 47 (duty to consult the local community) of that Act.
- 2.2 Under the Planning Act 2008, we are required to make an application to the Secretary of State through the Planning Inspectorate for a Development Consent Order (DCO) to build and operate this proposed scheme. The Planning Inspectorate will examine our application and the Secretary of State will decide on whether the proposed scheme should go ahead based on a recommendation made by the Planning Inspectorate. We anticipate that our DCO application for the proposed scheme will be submitted in summer 2022.
- 2.3 A key consideration for the Planning Inspectorate and the Secretary of State when assessing our DCO application is the National Networks National Policy Statement (NNNPS). The NNNPS sets out the need for development of road projects on the national networks and is the policy against which decisions on major road projects will be made.
- 2.4 When we submit our application, the Planning Inspectorate must consider whether our consultation has been adequate. The best time for you to have your say to inform our final design on this proposed scheme is now by taking part in this consultation.
- 2.5 You can find more information about the Planning Inspectorate and the Planning Act 2008 on their National Infrastructure Planning website: <http://infrastructure.planninginspectorate.gov.uk> or by calling the Planning Inspectorate on 0303 444 5000.

3 The proposed scheme

- 3.1 In March 2020, the Government's second Road Investment Strategy included a commitment for National Highways to improve Simister Island which connects the M62, M60 and M66. Simister Island Interchange is one of the busiest motorway junctions in the north-west used by around 90,000 vehicles each day. The junction struggles with high volumes of traffic above what it was designed for, and as a result suffers from congestion and poor journey time reliability.
- 3.2 The proposed scheme will improve junction 18 of the M60 and facilitate smoother flows of traffic along the M60, M62 and M66 in the scheme area, contributing to more reliable and safer journeys into and around Greater Manchester.
- 3.3 As part of the proposed scheme, we will convert the hard shoulder between junctions 17 and 18 of the M60 into a traffic lane, providing five lanes in each direction. This will reduce delays through the improved junction as well as on the M60.
- 3.4 The main objectives of the proposed scheme are:
- To improve the journey experience for users of this section of network by:
 - reducing congestion at peak times
 - reducing journey times
 - delivering more reliable journey times
 - To provide a scheme which is safe for all road users
 - To minimise the impact of our scheme on the surrounding environment including within Noise Important Areas and Air Quality Management Areas
 - To facilitate future economic growth across the Greater Manchester area by supporting the proposals in the regional and local authorities' transport strategies and Local Plans
- 3.5 In summary the proposed scheme consists of:
- A new structure providing a free-flow link from M60 eastbound to M60 southbound (clockwise), including a new bridge over the M66 and junction 18 slip roads
 - Realignment of the interchange slip road from the M66 southbound to accommodate the loop and the left-turn lane to the M62 eastbound. This includes a new bridge which allows the Northern Loop to pass under the slip road (M66 southbound diverge).
 - An upgraded two lane free flow link road from the M60 northbound to the M60 westbound (anti-clockwise)
 - M66 southbound to be widened to 4 lanes as it passes through junction 18.
 - Conversion of the hard shoulder into a permanent traffic lane between M60 junctions 17 and 18, providing 5 lanes in both directions (all lane running)
 - Renewal of traffic signals, signs and street lighting at junction 18 and its approaches, and new gantries on the M66 southbound
- 3.6 We have carried out an Environmental Impact Assessment for the proposed scheme. The proposed scheme is an Environmental Impact Assessment

development, and therefore we are publishing a Preliminary Environmental Information Report (PEIR) and a Non-Technical Summary (NTS) as part of the consultation material. This gives information about the likely significant environmental effects of the proposed scheme and the measures we suggest to reduce these. The PEIR has been developed based on assessment work completed to date. The PEIR and the NTS will be available online or to view at the deposit locations (subject to Covid-19 guidance) listed below.

- 3.7 Additional information about the proposed scheme, including detailed maps/plans and benefits of the scheme, will be included in our public consultation brochure. Copies of the brochure will be available at local display/deposit locations (subject to Covid-19 guidance) detailed in this SoCC during the consultation period and on our scheme webpage: www.nationalhighways.co.uk/M60-Simister-Island.

4 Consulting the community and previous consultations

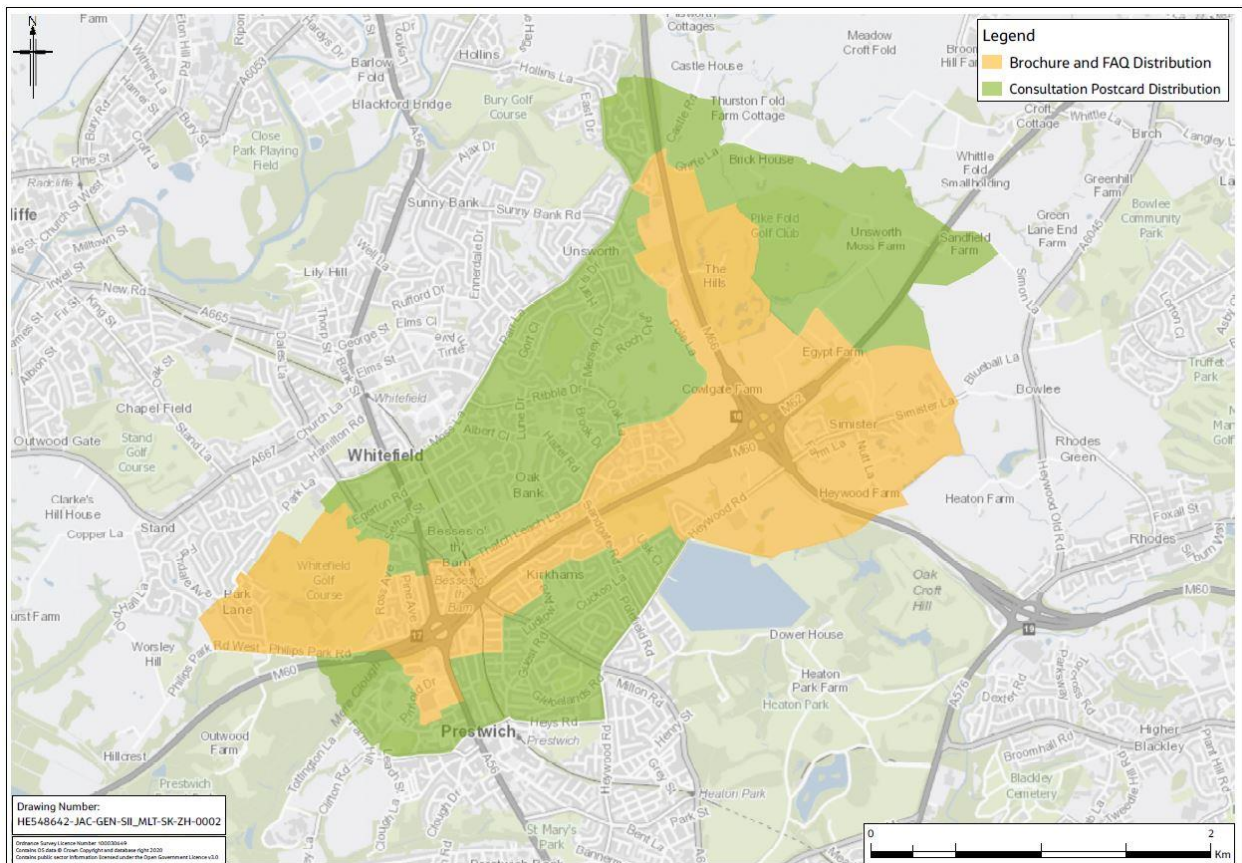
- 4.1 We have already carried out one round of consultation from June to August 2020 where we consulted on our proposed options for the scheme design, through an options consultation.
- 4.2 Consultees were asked for their views on the two proposed route options for the scheme with a view of selecting a preferred option. The Northern Loop option was announced as the preferred route option in January 2021.
- 4.3 More details, including the results of these consultations and how we decided to progress the Northern Loop are included in the Public Consultation Report and the Public Consultation Summary and PRA leaflet, available to download from www.nationalhighways.co.uk/M60-Simister-Island.

5 This consultation - why and when

- 5.1 It is important to us that our consultation will:
- Provide the opportunity to give feedback on and influence our proposals
 - Encourage the community to help shape our proposals to maximise local benefits and minimise any impacts
 - Help local people understand the potential nature and local impact of our proposals
 - Enable potential mitigation measures to be considered and, if appropriate, built into the proposed scheme before an application for a DCO is submitted
 - Identify ways in which our proposals, without significant costs, support wider strategic or local objectives
- 5.2 Your comments will help us achieve these objectives. We will listen to everyone's views, and we'll consider your opinions before we submit our DCO application.
- 5.3 The consultation will run from 10 January until 20 February 2022. During the consultation period, we will be consulting on the following elements of the proposed scheme:

- The scheme, including development of the preliminary design since the preferred route announcement
- environmental mitigation measures
- emerging arrangements for the construction stage of the scheme

5.4 Working with Bury Council, we have developed a distribution area for our consultation materials. We'll let people living/working in this area know about our consultation by posting information in advance. Properties located within the orange boundary will receive consultation brochures, **response forms** and a frequently asked questions (FAQ) document directly in the post, properties located between the green and orange boundary will receive a postcard informing them of the consultation. These boundaries have been created based on who we think will be affected by our proposals, those most affected receiving a brochure, **response form** and FAQ's document.



6 Who can take part?

6.1 Anyone who is interested in this proposed scheme is welcome to take part. We welcome all views and will take them into account before we submit our final design.

7 How will we consult?

7.1 We will use the following methods to promote our public consultation

Method	Detail
Consultation brochure	<p>The consultation brochure will contain details of the scheme, including any proposed environmental mitigation measures and updates to the scheme design. It will also include instructions for joining the telephone events, as well as a separate frequently asked questions document and response form. We will deliver this to those living within the orange distribution boundary.</p> <p>Copies of these documents will also be available to view at local display/deposit locations (subject to the government's national and local Covid-19 guidance). The suite of documents will include a Preliminary Environmental Information Report and a Non-Technical Summary which will set out environmental impacts and possible mitigation measures – all of which we'd like your views on.</p> <p>The consultation documents will be available in alternative formats, including large text format upon request.</p> <p>We can supply individual paper copies of the consultation brochure and response form free of charge. An electronic copy of the consultation documents can be supplied free of charge on a USB memory stick. A paper copy of the consultation documents can also be supplied, but there will be a reasonable charge for paper copies of consultation documents to cover the cost of printing and postage up to a charge of £500. Please contact National Highways using the contact details at the end of this notice to make a request.</p>
Scheme webpage	<p>A full summary of the scheme, this SoCC, the consultation brochure, online response form, Preliminary Environmental Information Report and non-technical summary and plan showing the extent of the scheme (red line boundary) will be available at: www.nationalhighways.co.uk/M60-Simister-Island.</p> <p>The following additional information will also be provided:</p>

Method	Detail
	<ul style="list-style-type: none"> • A flythrough video of the proposed scheme • Regularly updated frequently asked questions and answers • An animated video explaining the consultation and scheme in more detail • Previous consultation report
Telephone consultation events	<p>The project team will be available to answer questions at the following times through telephone consultation events:</p> <ul style="list-style-type: none"> • Monday 17 January 11am – 7pm • Saturday 29 January 11am – 4pm • Saturday 5 February 11am – 4pm • Thursday 10 February 11am – 7pm • Wednesday 16 February 11am – 7pm <p>The details of these events will also be made available on the scheme webpage and in the brochure.</p>
Public online webinars	<p>We will be hosting a series of online webinars, delivering a presentation on our proposals and holding a live question and answer session.</p> <p>The webinars will be held:</p> <ul style="list-style-type: none"> • Monday 24 January 1pm – 3pm • Wednesday 2 February 5pm – 7pm
Consultation events	<p>We plan to hold two consultation events. Here you can find out more about the proposed scheme and speak to members of the project team who will be happy to answer any questions you may have.</p> <ul style="list-style-type: none"> • Saturday 22 January 10am – 4pm. Lady Wilton Hall, Simister Lane, Prestwich, Manchester, M25 2SB • Monday 7 February 12pm – 8pm. Unsworth Cricket Club, The Pavillion, Pole Lane, Bury, BL9 8QL <p>Please note that these events are subject to the government's national and local COVID-19 guidelines.</p>
Council and community / area forum briefings	Where possible we'll speak when invited to local Council forums and community / area

Method	Detail
	forums affected or in the vicinity of our scheme.
Stakeholder briefings	Where possible we will attend when invited, meetings of local community groups affected by the proposal.
Statutory notices	Statutory notices to publicise the proposed DCO application and the SoCC will be issued in the following newspapers: <ul style="list-style-type: none"> • Proposed DCO application - once in the Guardian and London Gazette and twice in local circulating newspapers including: <ul style="list-style-type: none"> ○ The Bury Times ○ Jewish Telegraph • Publicising the SoCC - once in local circulating newspapers including: <ul style="list-style-type: none"> ○ The Bury Times ○ Jewish Telegraph
Press releases	Press releases detailing the consultation period and how the community and road users can get involved will be issued.
Social media	The public consultation will be advertised on Twitter @HighwaysNWest and publicised on National Highways Facebook page National Highways: North-West. Paid for social media adverts will be placed.

7.2 Impact of COVID-19

Please note that the planned consultation events are subject to the government's national and local COVID-19 guidelines. Any changes to our planned events will be updated on the webpage for the scheme at www.nationalhighways.co.uk/M60-Simister-Island and on social media. We recommend that you check our scheme webpage or call us on 0300 123 5000 in advance of attending an event to confirm that the event is going ahead. Details of the events will be publicised on the scheme's webpage, social media sites and in press releases.

Should tighter restrictions come into place where members of the public are advised to stay at home during the consultation period, and deposit points are not able to be used, please contact us on the number below if you would like a printed copy of the consultation brochure to be posted to you.

- 7.3 Any activity(s) that cannot be undertaken due to circumstances beyond our control (such as severe weather conditions) where possible, will be substituted with similar activity(s) and advertised on the scheme's webpage or you can contact us by calling the Customer Contact Centre on 0300 123 5000.

How to respond to the consultation:

7.4 A consultation response form will be produced to help you provide comments on the proposed scheme design. All consultation responses must be made by:

- Completing the online response form at www.nationalhighways.co.uk/M60-Simister-Island
- Picking up a hardcopy at one of our display/deposit locations which can be posted via the freepost address (subject to current Covid-19 government guidance) or
- Alternatively, you can:
 - Email: M60J18SimisterIslandInterchange@highwaysengland.co.uk or
 - write to us: Freepost M60 J18 SIMISTER ISLAND

7.5 All responses must be received by **11:59pm on Sunday 20 February 2022**.

8 Information available at and details of local display/deposit locations:

8.1 The below list will be made available for your information to help inform your consultation response:

- Public consultation brochure and response form
- Scheme/Route map showing the full extent of the scheme on a provisional order limits
- Preliminary Environmental Information Report & Non-Technical Summary
- Section 48 Notice
- Statement of Community Consultation (SoCC)
- Previous public consultation reports and/or public consultation summary documents
- Development Consent Order leaflet

8.2 The deposit points below are open at the time of publishing this document, however, these may change or may be added to due to closure or if COVID-19 restrictions are increased. If deposit locations are not accessible, you can still view all of our materials on our project webpage at www.highwaysengland.co.uk/m60-j18-simister-island.

8.3 We can supply individual paper copies of the consultation brochure and response form free of charge. An electronic copy of the consultation documents can be supplied free of charge on a USB memory stick. A paper copy of the consultation documents can also be supplied, but there will be a reasonable charge for paper copies of consultation documents to cover the cost of printing and postage up to a charge of £500. Please contact National Highways using the contact details above to make a request.

8.4 You can request copies of our materials by emailing us or ringing our Customer Contact Centre on 0300 123 5000.

Deposit/display Location (subject to current Covid-19 government guidance)	Opening times
Bury Town Hall, Knowsley Place, Knowsley Street, Bury, BL9 0SW	Monday to Friday 8.45-17:00 Saturday and Sunday Closed

(Public consultation and response form only)	
Bury Library, Manchester Road, Bury, BL9 0DG	Monday Closed Tuesday 10.00-16.30 Wednesday 10.00-16.30 Thursday 12.30-19.00 Friday 10.00-16.30 Saturday 9.30-13.00 Sunday Closed
Prestwich Library, Longfield Centre, Prestwich, Manchester, M25 1AY	Monday Closed Tuesday 10.00-16.30 Wednesday 10.00-16.30 Thursday 12.30-19.00 Friday 10.00-16.30 Saturday Closed Sunday 9.30-13.00
Radcliffe Library, Stand Lane, Radcliffe, Manchester, M26 1JA	Monday Closed Tuesday 10.00-16.30 Wednesday 10.00-16.30 Thursday 12.30-19.00 Friday 10.00-16.30 Saturday 9.30-13.00 Sunday Closed
Radcliffe Leisure Centre, Spring Lane, Radcliffe, M26 2SZ (Public consultation and response form only)	Monday to Friday 7:00-22:00 Saturday 8:00-18:00 Sunday 8:00-16:00
Berry's of Unsworth (Post Office), 73 Parr Lane, Bury BL9 8JR (Public consultation and response form only)	Monday to Friday 8:00-16:00 Saturday 8:00-14:00 Sunday Closed

9 Next steps

- 9.1 We will record and carefully consider all responses received during the consultation which will be taken into account in finalising our DCO application before we submit it to the Planning Inspectorate.
- 9.2 We'll summarise our findings in the DCO Consultation Report which forms part of our application to the Planning Inspectorate.
- 9.3 The Planning Inspectorate will decide whether the application meets the required standards to proceed to examination and will determine whether our consultation has been adequate.
- 9.4 For more information visit our scheme webpage where you can also sign up for email alerts whenever the webpage is updated. If you have any queries about this scheme, please contact the project team directly by calling 0300 470 5000 or emailing M60J18SimisterIslandInterchange@highwaysengland.co.uk

Your data, your rights

- 9.5 On 25 May 2018, the General Data Protection Regulations (GDPR) became law. The law requires National Highways to explain to you – consultees, stakeholders and customers – how your personal data will be used and stored. National Highways adheres to the government’s consultation principles, the Planning Act 2008 as required, and may collect personal data to help shape development of highways schemes. Personal data collected by the project team will be processed and retained by National Highways and its appointed contractors until the scheme is complete. Under the GDPR regulations you have the following rights:
- Right of access to the data (Subject Access Request)
 - Right for the rectification of errors
 - Right to erasure of personal data – this is not an absolute right under the legislation
 - Right to restrict processing or to object to processing
 - Right to data portability
- 9.6 If, at any point, National Highways plans to process the personal data we hold for a purpose other than that for which it was originally collected, we will tell you what that other purpose is. We will do this prior to any further processing taking place and we will include any relevant additional information, including your right to object to that further processing.
- 9.7 You have the right to lodge a complaint with the supervisory authority, the Information Commissioners Office.
- 9.8 If you’d like more information about how we manage data, or a copy of our privacy notice, please contact: DataProtectionAdvice@highwaysengland.co.uk

E.2 Draft SoCC email to Bury Council 18 November 2021

From [REDACTED]

Sent: 18 November 2021 09:43

To: [REDACTED]

Cc: [REDACTED]

M60 J18 Simister Island Interchange

<M60J18SimisterIslandInterchange@highwaysengland.co.uk>

Subject: M60 J18 - update of SoCC - 18 November

Importance: High

Morning

Following recent discussions on our Statement of Community Consultation (SoCC), please see attached our updated SoCC for the M60/M62/M66 Simister Island Interchange scheme. I have listed below the changes made since the document was formally issued and approved by Bury Council on 06/08/21 and also highlighted these changes in yellow within the document:

- Updates to statutory consultation start/end dates
- Change of name from Highways England to National Highways/updates to website address
- Event/telephone/webinar date updates to reflect change in statutory consultation date
- Updates to deposit point opening times
- Update of proposed scheme to reflect brochure content
- Update to scheme consultation boundary to reflect changes in scheme design (note the boundary remains the same, however the ratio of those receiving brochures and postcards has changed)
- Updates to scheme objectives to reflect brochure content
- Section 7.2 updated to request the scheme webpage is checked to confirm events are going ahead, rather than contacting the events directly
- Section 5.3 updates to first bullet to state we will be consulting on the scheme, including the preliminary design changes

If you could please confirm you are happy with the updates made to the SoCC, your prompt response to this would be much appreciated.

Kind Regards